

## Load Testing with Fiddler and StressStimulus

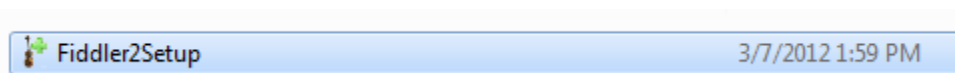
The following is a brief overview of performing a load test using Fiddler and the StressStimulus plug-in:

To load test with Fiddler:

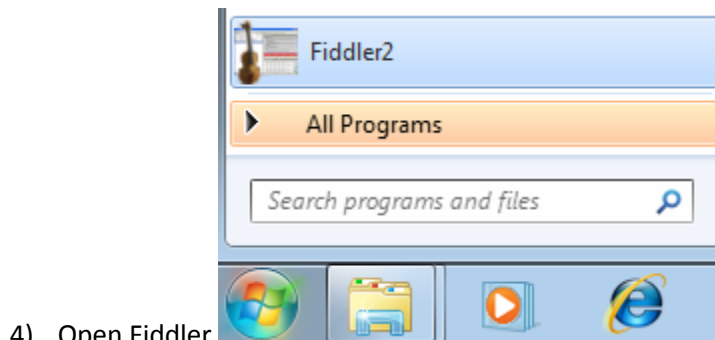
- 1) Download Fiddler:

<http://www.fiddler2.com/fiddler2/>

- 2) Run Fiddler2Setup.exe by double clicking it and following all prompts:

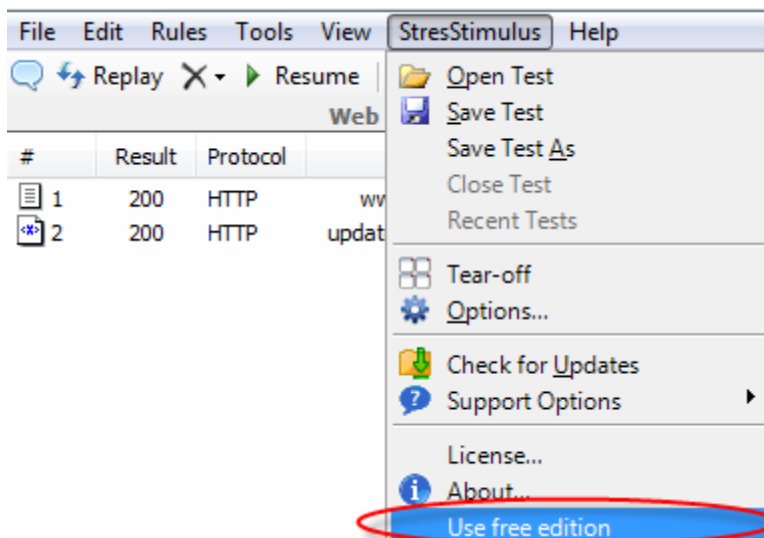


- 3) Download StressStimulus – a Fiddler add-on: <http://stresstimulus.stimulustechonology.com/>

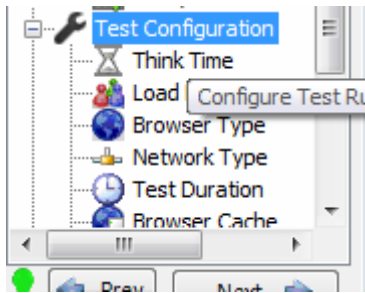


- 4) Open Fiddler

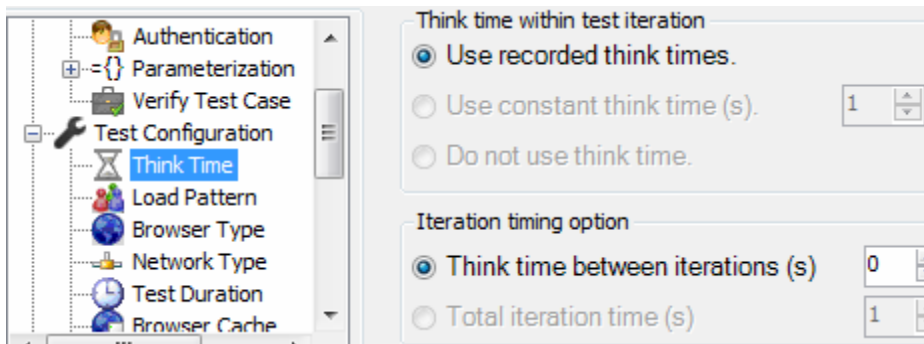
- 5) Select StressStimulus -> Use free edition:



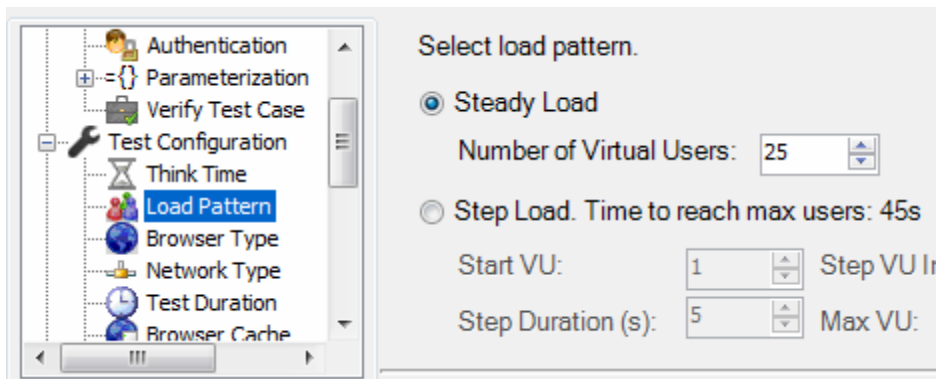
6) Under Test Configuration – select the desired settings:



7) Think Time:

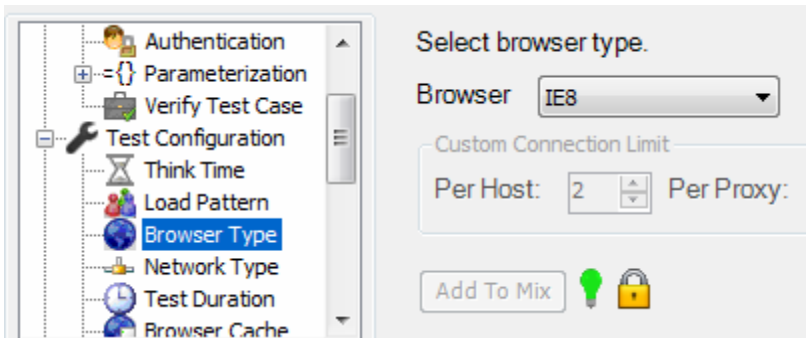


8) Load Pattern – in this case it's been set to 25:

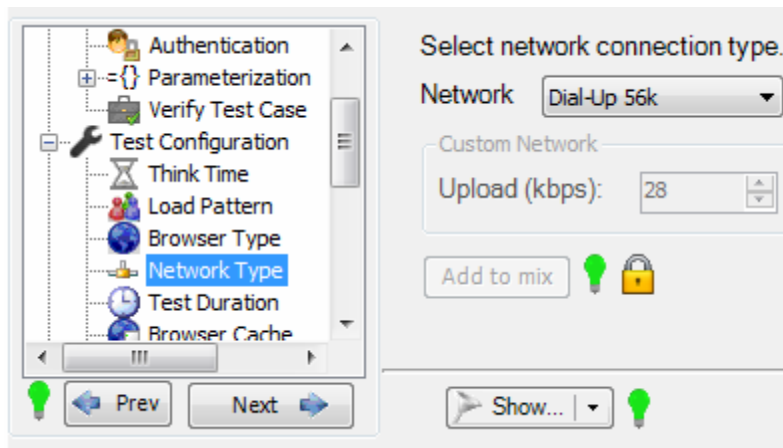


9) Browser Type – set to IE8:

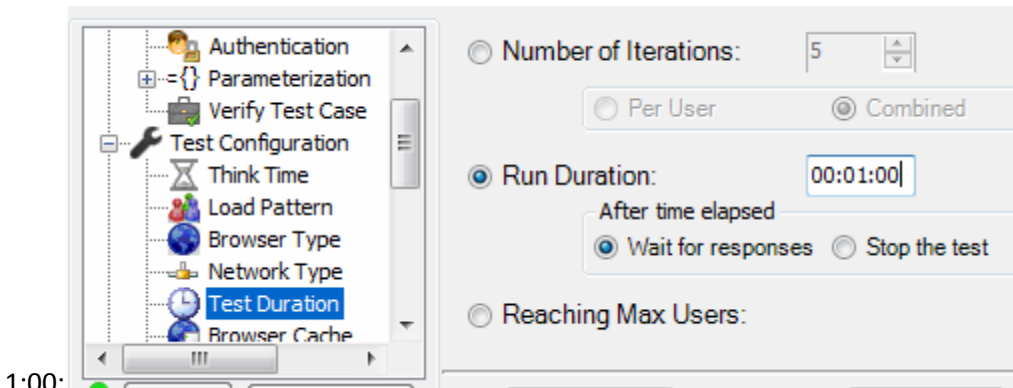
# KEVIN O'NEILL



10) Network Type set to Dial-up 56K:

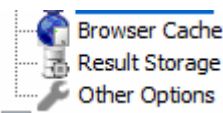


11) Test Duration selected Run Duration and set it for

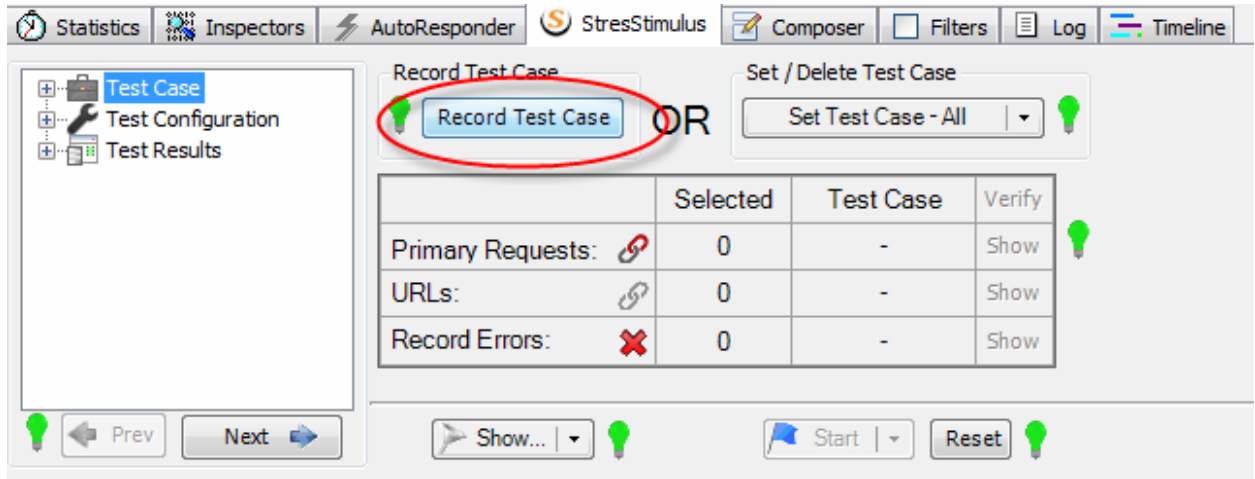


1:00:

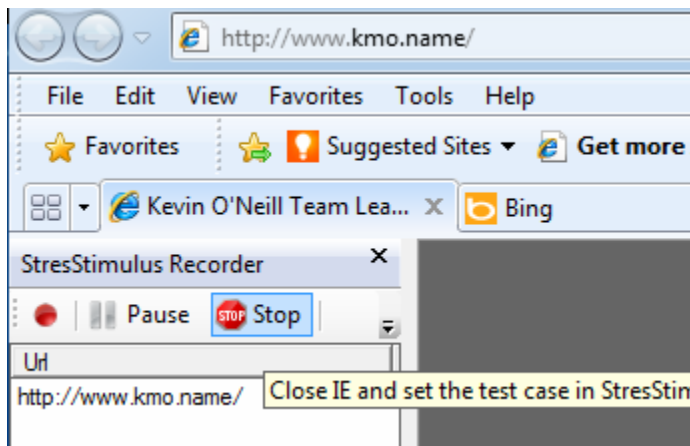
12) All other selections – left alone:



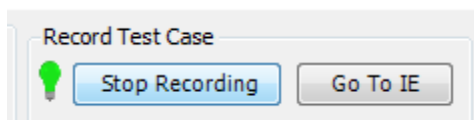
- 13) Select the StreStimulus tab – then select record Test Case:



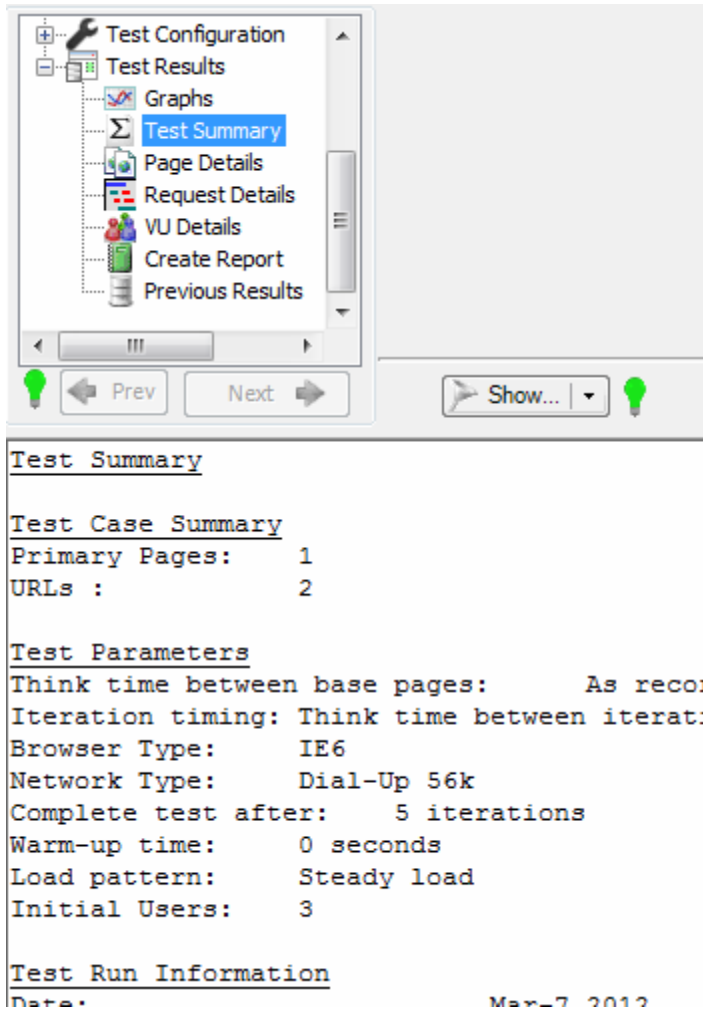
- 14) Access a website – and perform the desired piece of functionality – in this case here – I am just testing the home page as an example – when done select Stop:



Go back to Fiddler and click Stop recording:



- 15) Select the Test Summary selection and several items come-up of value that can now be looked at and remedied as desired:



The screenshot shows a software interface with a tree view on the left. The tree view has the following items: Test Configuration, Test Results, Graphs, Test Summary (highlighted), Page Details, Request Details, VU Details, Create Report, and Previous Results. Below the tree view are navigation buttons: Prev, Next, and Show... with a dropdown arrow. Below the navigation buttons is a lightbulb icon.

Test Summary

Test Case Summary

Primary Pages: 1  
URLs : 2

Test Parameters

Think time between base pages: As recor  
Iteration timing: Think time between iterati  
Browser Type: IE6  
Network Type: Dial-Up 56k  
Complete test after: 5 iterations  
Warm-up time: 0 seconds  
Load pattern: Steady load  
Initial Users: 3

Test Run Information

Date: Mar-7 2012