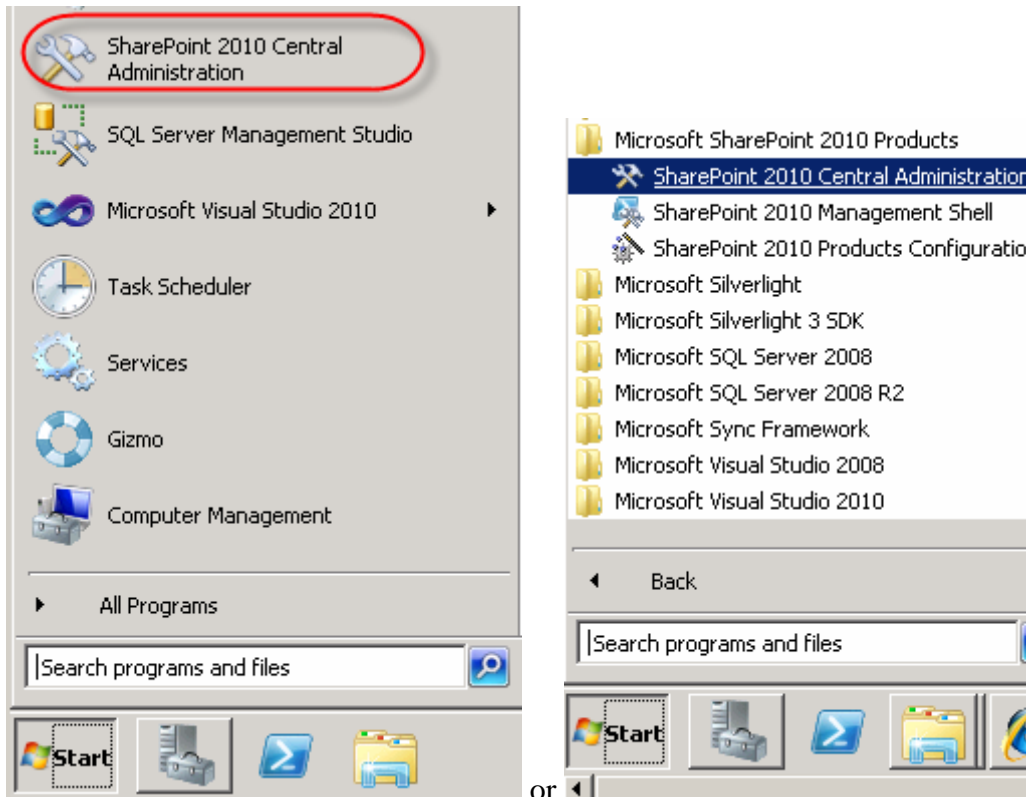


# KEVIN O'NEILL

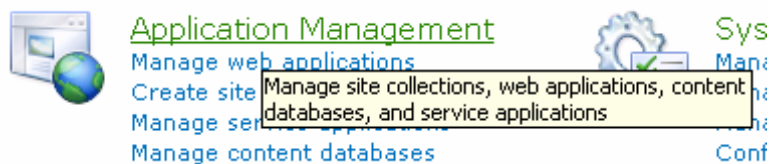
## SharePoint 2010 How to Delete a Managed Metadata Service Application

Provided one has the proper permissions (typically one needs to be a farm administrator), they can utilize the following:

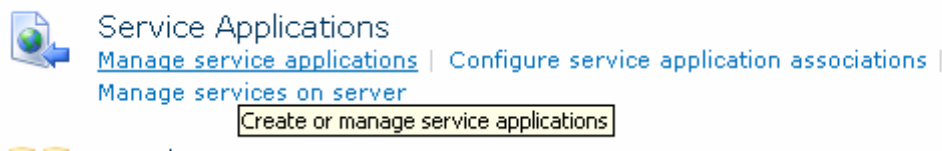
Access SharePoint 2010 Central Administrator:



Select Application Management:

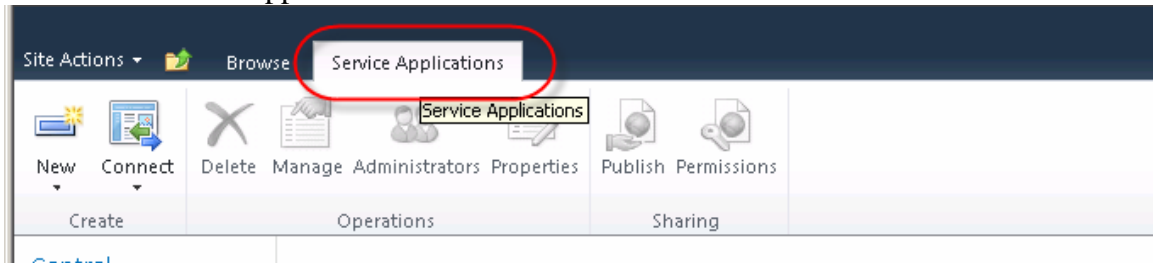


Under Service Applications – select Manage service applications:



# KEVIN O'NEILL

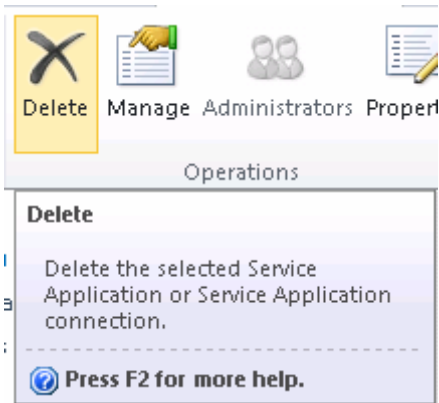
Select the Service Applications tab:



Select the desired row:

	Application Proxy
Managed Metadata Service	Managed Metadata Service
Managed Metadata Service	Managed Metadata Service Connection

On the ribbon click delete:



# KEVIN O'NEILL

## Don't select Delete Data Associated with the Service Applications connections

You are about to delete the following Service Application connections:

- Managed Metadata Service

Delete data associated with the Service Application connections

This action cannot be undone.

OK

Cancel

Click OK